



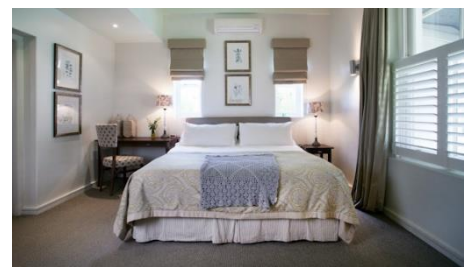
Klein Welmoed Wine and Olive Estate is set in the heart of the Cape Winelands and is close to Cape Town International Airport (30 km), between Stellenbosch and Somerset West.

The Barn Conference Venue has air-conditioning and a fireplace for the colder months. Depending on the required set-up, it can seat up to 40 delegates, a tranquil venue for meetings, accommodation, functions, teambuilding and breakaways.



ACCOMMODATION Visit our website www.kleinwelmoed.co.za for more information on the area and accommodation.

We are able to accommodate up to 24 people sharing or 12 single, in our guest house and luxury cottages,



and have a network agreement with neighbouring guest houses to ensure accommodation for more delegates. We have 4 double bedroom cottages and 4 Manor House Rooms. All our rates include breakfast.



Request a quotation with details:

FULL DAY PACKAGE

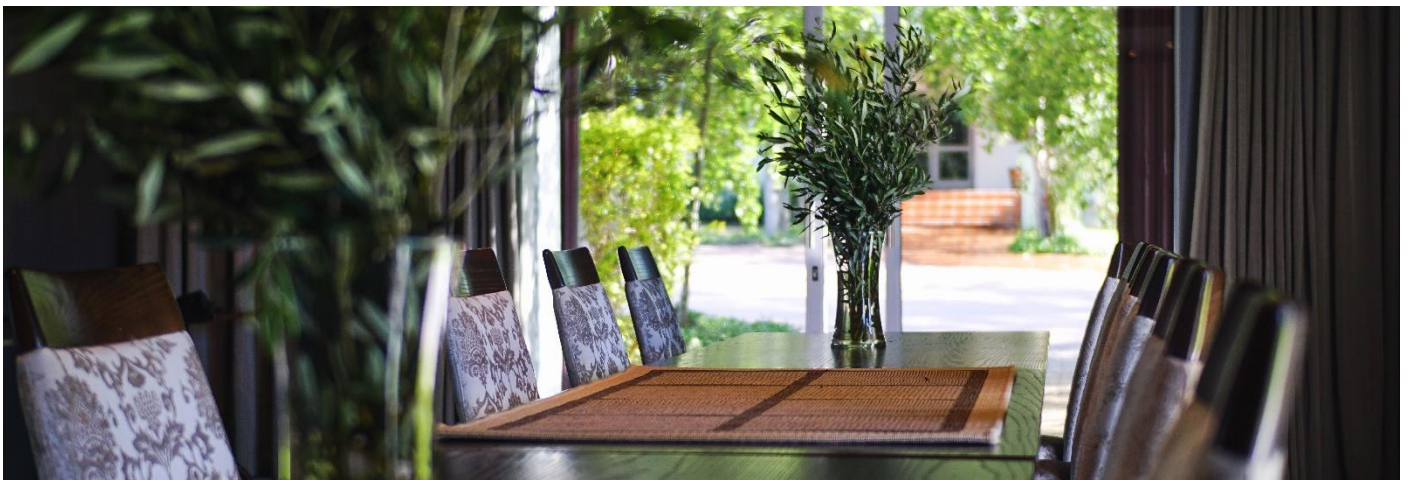
HALF DAY PACKAGE

PACKAGES INCLUDE:

- ✓ Conference venue (66 square meters) – ideal seating 30 delegates and 15 at 50% capacity
- ✓ Tea, coffee, snacks, cake: on arrival, mid-morning and afternoon breaks
- ✓ Lunch served with fruit juice
- ✓ Mints and bottled water
- ✓ One flip chart with paper and colour board markers

Optional Extras:

- ✓ Conference equipment: request quotation for stationary, extra flip charts, screen and/or projector
- ✓ Accommodation Bed & Breakfast: request a special rates quotation for groups



Free Wine Tasting for groups staying over – subject to availability of our marketer.

MEALS – we do not have an onsite restaurant. All meals to be pre-ordered. See Terms.

Conference lunch: included in both packages

Dinner: on request

Breakfast: where applicable

Terms & Conditions on quotation

Conference Times:

- 07:30 Coffee/tea muffin on arrival – confirm arrival time. Breakfast served to in house guests.
- 10:30 Check out for guests departing
- 11:00 Mid-morning coffee/tea break
- 13:00 Lunch (half day conference – conference venue closed)
- 14:00 Check in for guests staying over
- 15:00 Mid-afternoon coffee/tea break (full day)
- 17:00 Venue closed

